

2 HOURS TOUR: ARAB MODERN ART COLLECTION



STOP 1/ MATHAF: ARAB MUSEUM OF MODERN ART

**PERMANENT COLLECTION:
'SUMMARY, PART 2'**
September 10, 2017 – February 10, 2019

**'FOCUS: WORKS FROM MATHAF
COLLECTION'**

**SHAKIR HASSAN AL SAID:
'THE WALL' MOHAMMED
MELEHI: '1971-1959'**
September 10, 2017 – February 14, 2018

Opening Hours:
Saturday – Thursday:
9am to 7pm
Friday: 1:30pm to 7pm

Tip:
Hop on the Mathaf Bus, a free shuttle between Mathaf and MIA. Mathaf Bus is kindly sponsored by Occidental Petroleum of Qatar.

Start the tour by visiting 'Focus: Works from Mathaf Collection' and explore Shaker Hassan Al Said's 'The Wall' exhibition, which looks at the artist's work from the early 1950s to the late 1990s, as well as Mohammed Melehi's '1959-1971' exhibition, exploring his curiosity with ideological, scientific, and political systems in society.

Continue to the permanent collection, 'Summary, Part 2', showcasing the museum's most iconic works and highlighting ground breaking modern and contemporary artists from the Arab world. Also on view is Wael Shawky's 'Al Araba Al Madfuna III' film, showing daily from 3:00pm-6:00pm.

3 HOUR TOUR: GERMAN ART AND DESIGN



STOP 1/ FIRE STATION ARTIST IN RESIDENCE

**'GERMAN ENCOUNTERS –
CONTEMPORARY MASTERWORKS
FROM THE DEUTSCHE BANK
COLLECTION'**
October 3, 2017 – January 20, 2018

STOP 2/ QATAR MUSEUMS GALLERY AL RIWAQ

'DRIVEN BY GERMAN DESIGN'
October 3, 2017 - January 14, 2018

Opening Hours:
Saturday – Thursday:
9am to 7pm
Friday: 1:30pm to 7pm

Tip:
While at the Fire Station, grab a coffee and a bite to eat at the cosy Café #999. Finish the tour in MIA Park to visit Richard Serra's sculpture '7' and enjoy the stunning views of West Bay from the Café kiosks

The 'German Art and Design' tour takes you on a journey that explores the distinctiveness of German design and contemporary art. Start the tour with 'German Encounters', an exhibition that showcases a fine selection of contemporary art from the Deutsche Bank Collection through more than 100 exemplary works on paper, including photographs and paintings.

Continue your visit to Qatar Museums Gallery Al Riwaq to see 'Driven by German Design', which features items that have never been displayed before and traces the evolution of German design over more than six decades, from the 1950's to the present day, as well as providing a glimpse into the future.

3 HOUR TOUR: ARMOUR AND DYNASTIES



STOP 1/ MUSEUM OF ISLAMIC ART

**'IMPERIAL THREADS: MOTIFS AND
ARTISANS FROM TURKEY, IRAN
AND INDIA'**
March 15, 2017 - January 27, 2018

**'POWDER AND DAMASK: ISLAMIC
ARMS AND ARMOUR FROM THE
COLLECTION OF FADEL AL-MAN-
SOORI'**
August 27, 2017 - May 12, 2018

Opening Hours:
Saturday – Thursday:
9am to 7pm
Friday: 1:30pm to 7pm

Tip:
Enjoy fine dining at IDAM, an Alain Ducasse restaurant on the 5th floor of the museum.

First visit MIA's permanent collection, which represents the vast diversity of Islamic art from across three continents. After, proceed to the ground floor galleries to 'Imperial Threads', an exhibition showcasing the cultural exchange between three major dynasties, Ottoman, Safavid and Mughal, which mark the start of the early modern period in Islamic art.

Finish off your visit with the 'Powder and Damask' exhibition, a showcase of Islamic arms and armour from Fadel Al Mansoori's private collection. The works of art on display range from the 17th to the 19th century that found their place in the hands of sultans, high-ranking commanders and elite members of society.

5 HOUR TOUR: STEPPING BACK IN TIME



STOP 1/ AL ZUBARAH ARCHAEOLOGICAL SITE

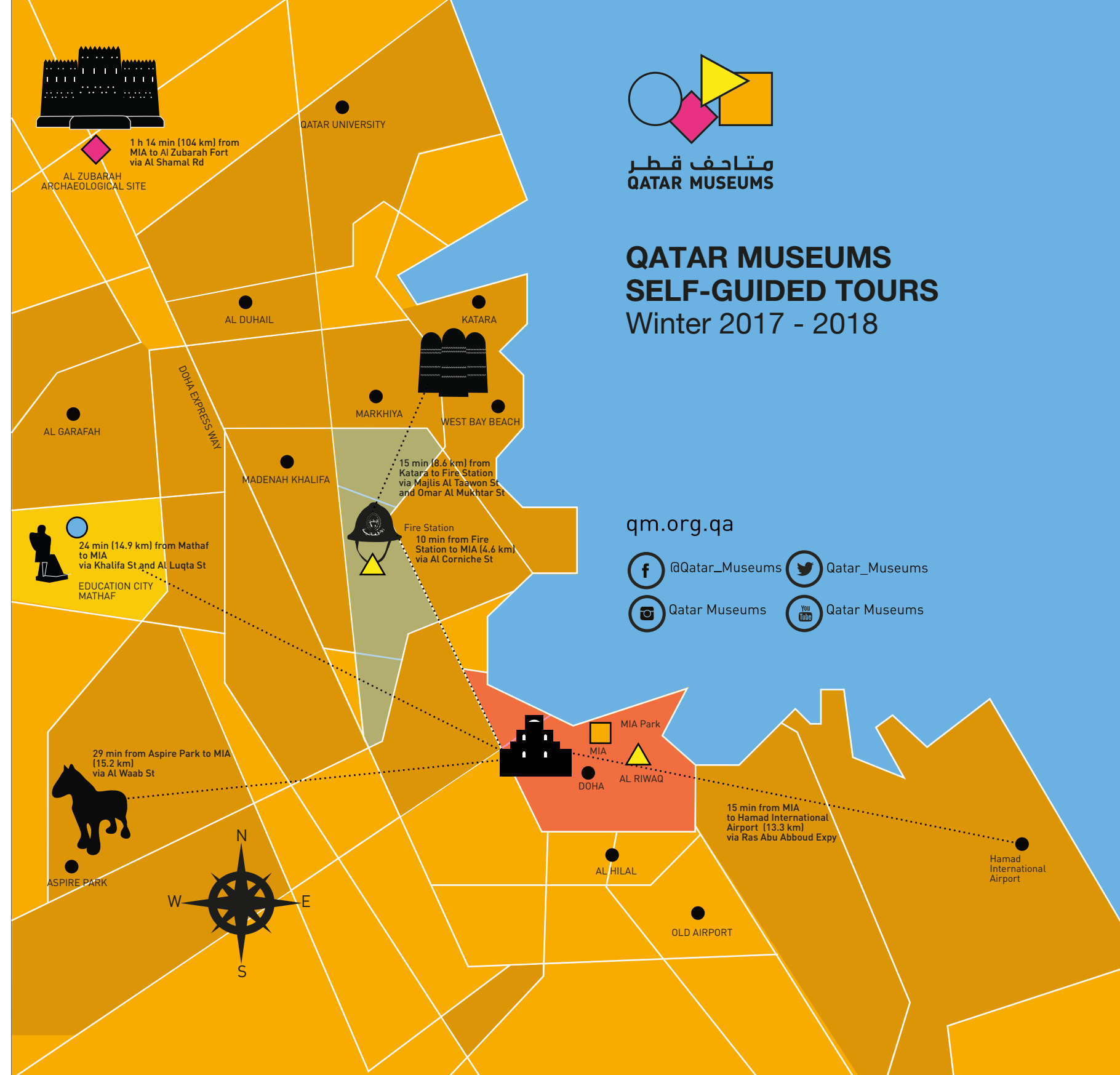
N25°58.623 E51°1.727
469096 – 181264 (QNG)

Opening Hours
09:00 am to 05:00 pm

Tip:
Make sure you send an email to Qatar Museums: culturaltourism@qm.org.qa at least one week before your planned visit to the site

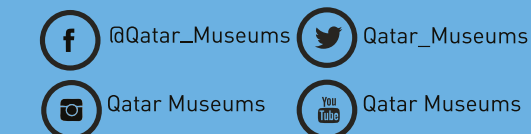
Across Qatar, there are many heritage sites that show the richness and value of Qatari history and tradition. Step out of urban Doha and head north to explore Al Zubarah Archaeological Site, Qatar's first UNESCO World Heritage Site.

Its cultural landscape is an outstanding example of the socio-economic transformation of the land, serving to shed light on the urban trading and pearl-diving traditions that sustained the major coastal towns of the region from the early Islamic period to the 20th century.



QATAR MUSEUMS SELF-GUIDED TOURS Winter 2017 - 2018

qm.org.qa



2 HOURS TOUR: ARAB MODERN ART COLLECTION

**STOP 1/
MATHAF: ARAB MUSEUM OF
MODERN ART**

3 HOUR TOUR: GERMAN ART AND DESIGN

**STOP 1/
FIRE STATION ARTIST
IN RESIDENCE**

**STOP 2/
QATAR MUSEUMS GALLERY
AL RIWAQ**

3 HOUR TOUR: ARMOUR AND DYNASTIES

**STOP 1/
MUSEUM OF ISLAMIC ART**

5 HOUR TOUR: STEPPING BACK IN TIME

**STOP 1/
AL ZUBARAH
ARCHAEOLOGICAL SITE**

EXPLORE ART IN THE STREETS OF QATAR

OUR PUBLIC ART ENRICH PUBLIC SPACES AND PLAY AN IMPORTANT ROLE IN BRINGING ART TO THE COMMUNITY'S EVERYDAY LIFE. THIS ITINERARY INCLUDES HIGHLIGHTS OF IMPORTANT PIECES, CHOOSE WHICH ONES TO SEE OR SPEND A FULL DAY EXPLORING THEM ALL.



SET WITHIN THE FIRE STATION COMPLEX ADJACENT TO THE ARTISTS' STUDIOS, THE CAFÉ OFFERS A COOL AND INFORMAL SETTING FOR LIGHT FOOD AND DRINKS WITH A LOCAL TWIST. CAFÉ #999# IS OPEN FROM 8AM TO 11PM SATURDAY TO THURSDAY AND 2PM TO 11PM ON FRIDAYS. CAFÉ #999# IS COLLABORATION BETWEEN QATAR MUSEUMS AND SALAM HOSPITALITY.

STOP 1

EAST-WEST/WEST-EAST BY RICHARD SERRA

LOCATION

RAS ABROUQ PENINSULA

(N31.012 °25 E52.018 °50)

QNG (418135 – 164952)

A BREATH-TAKING SCULPTURE OF FOUR STEEL PLATES, EACH FOURTEEN METERS IN HEIGHT, AND SPAN OVER A KILOMETER IN THE HEART OF THE QATARI DESERT.

A 4WD IS REQUIRED TO REACH THE SCULPTURE.

STOP 2

PERCEVAL BY SARAH LUCAS

LOCATION

ASPIRE PARK

A BRONZE SCULPTURE OF A SHIRE HORSE DEMONSTRATING THE ARTIST'S FASCINATION WITH BRITISH CULTURE.

STOP 3

7 BY RICHARD SERRA

LOCATION

MIA PARK

DAILY 24 HOURS

A POWERFUL 20-METER SCULPTURE FACING THE SEA, MADE OF SEVEN STEEL PLATES.

OPENING HOURS: SATURDAY TO THURSDAY: 9:00AM TO 7:00PM

FRIDAY: 1:30 TO 7:00PM

STOP 4

GHANDI'S THREE MONKEYS BY SUBODH GUPTA

LOCATION

KATARA CULTURAL VILLAGE

A BRONZE INSTALLATION PAYING HOMAGE TO GANDHI'S 'SEE NO EVIL, HEAR NO EVIL, SPEAK NO EVIL'.